

BARTON

Owen Henry Barton and Emma Zwahlen

Beginnings

Owen Henry Barton was born 16 Oct 1892 in the house now #990 South State in Ferron. His parents are John Henry Barton and Martha Ann Boswell who came to Ferron in 1886. The Bartons originated in Lancashire, England.

Emma Zwahlen was born 7 Aug 1895 in a house a half mile south of Owen. Her parents are John Zwahlen and Mary Schulthess who came to America from Switzerland.



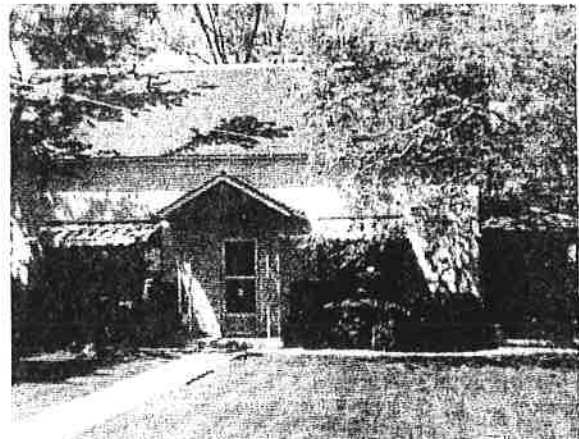
Emma and Owen Barton

As a young boy Owen said his chores were to milk six to eight cows and feed pigs and horses. Owen's best friends and neighbors were Ural Christensen and Arthur Peterson. Emma indicated she helped her father extract honey from his bees. She also did much house work and some gardening.

Owen and Emma both graduated from the 9th grade in Ferron. Emma took advanced schooling in Ephraim. Owen and Emma were both baptized in the Ferron Creek.

Marriage and Family

Owen courted Emma for three years. They both lived in the south end of Ferron. They went to silent movies, roller skating, and to a dance once a week. They always walked or went in a buggy. Owen and Emma were married in the Salt Lake Temple in 1914. Owen bought the family farm and added more property until they had a large, thriving cattle ranch and farm. Emma gave birth to all six children — Una, Nina, John, Jerald, Dean and Kent — in the family home which is now 990 South State.



Owen and Emma Barton residence

To help support the farm and family, Owen peddled to Sunnyside and Morland in a covered wagon pulled by horses. He peddled meat, eggs, butter, potatoes, and apples generally to stores. For his motel he would shovel away the snow, lay down a tarp, and then use quilts for a bed. After peddling a few years, he put on springs and added a stove inside the wagon.

Emma said as the family came, they got electricity and water piped to the house. Not having to sew by lamplight until 2:00 in the