

EDMUND CRAWFORD, '04

Emery County Bank, Castle Dale, Utah

EDMUND was born in Manti, Utah, July 11, 1882. He attended the public schools of his native town, and in 1899 entered the U. A. C. where he pursued the course in Mechanical Engineering until his graduation in 1904.

During the five years spent as a student at the A. C., Mr. Crawford took an active part in various student activities, such as foot-ball and other forms of athletics. He was a member of the Engineering Society and took part in the early Minstrel shows, given by the Athletic Association.

After graduating he spent one year in electrical work with the Utah Light and Power Company, in Bear River canyon. Then for a number of years, he worked with his brother, Stanley

Crawford, '00, erecting numerous electrical plants in the central and southern parts of the State. He then accepted a position in the Manti Savings Bank, at the same time teaching bookkeeping in the City High School. His latest promotion consists in being made Cashier of the Emery County Bank at Castle Dale, Utah. Since 1905 he has been interested, together with his brother, in a large and flourishing poultry farm

and flourishing poultry farm and flourishing poultry farm was married May 17, 1909, to Miss Thurnelda Singleton of Ferron, Utah.



STANLEY CRAWFORD, '00 Manti, Utah

STANLEY was born January 6, 1879, at Manti, Utah. Here he attended the public schools from which he was graduated in the spring of 1897. In September of the same year he entered the U. A. C. as a student in mechanical engineering. He played foot-ball, studied Latin and Greek, and was voted a "jolly good fellow" by all his classmates. He was graduated with the degree of B. S. in June, 1900.

Since graduating, Mr. Crawford has been engaged in electrical engineering throughout the southern and central parts of the State. He has his attention more particularly to electricity and now has an electrical engineering office at Manti, Utah. The following is a brief synopsis of his engineering work done by Mr. Crawford since graduating:

In 1902 he installed electric light and power plants for the Big Spring Co., Fountain Green, Utah, which supplies light and power to Fountain Green and power plant for.

In 1903 he put in a lighting system at Spring City, Utah. Later in the same year he installed a lighting system for Spring City Light Company.

In 1905 he installed electric light and power plants for the City of Manti, Utah, and later in the same year, put in a lighting system for the Milling Company, Spring City, Utah.

In 1906 he installed electric light and power plants for the City of Manti, Utah, and later in the same year, put in a lighting system for the Milling Company, Spring City, Utah.



STARTING FOR THE STATION WITH CHICKS AND EGGS

In 1907, he installed an Independent Telephone System of the common battery type for the Manti Telephone Co., Manti, Utah. Later in the season, he installed two electric light plants, one for Cedar City Light and Power Co., at Cedar City, and one at Parowan City, both in Iron County, Utah.



PART OF A DAY'S HARVEST

In 1905, Mr. Crawford, in company with his brother, Edmund, '04, founded the Crawford Poultry Farm at Manti, a venture which has proved successful in a very eminent degree. The business is carried out on extensive scale, thousands of chicks are hatched artificially each season, and either sold at once or reared to maturity. The profits from the sales of chicks, eggs, and pure bred birds for breeding is very satisfactory, and the frequent prizes for pure breeds still further augment both pleasure and profit. The varieties kept are S. C. Brown Leghorns, R. C. Brown Leghorns, S. C. White Leghorns, and Silver Duckwing Leghorns.



EDMUND CRAWFORD, '04
BANKER

Mr. Edmund Crawford, '04, who is cashier of the Emery County bank at Castlelake, is a representative banker. Four or five others are in the same line of work.



ELLIS HUDMAN, '08
ENGINEER

The various professions are all exemplified in the Association. Mr. Hudman, '08, is representative of about a score of eminently successful engineers who are practicing in various localities in the West.



J. E. BARRACK, '05—Alaska

J. E. Barrack, '05, is employed in the wholesale and retail machinery trade at Fairbanks, Alaska. Several men are in the Philippine service; others are editors of agricultural papers; some are in the army and some in the ministry. Several men are in the U. S. Reclamation Service, and a large group are in the U. S. Department of Agriculture.

Addresses of the Utah Agricultural College Alumni

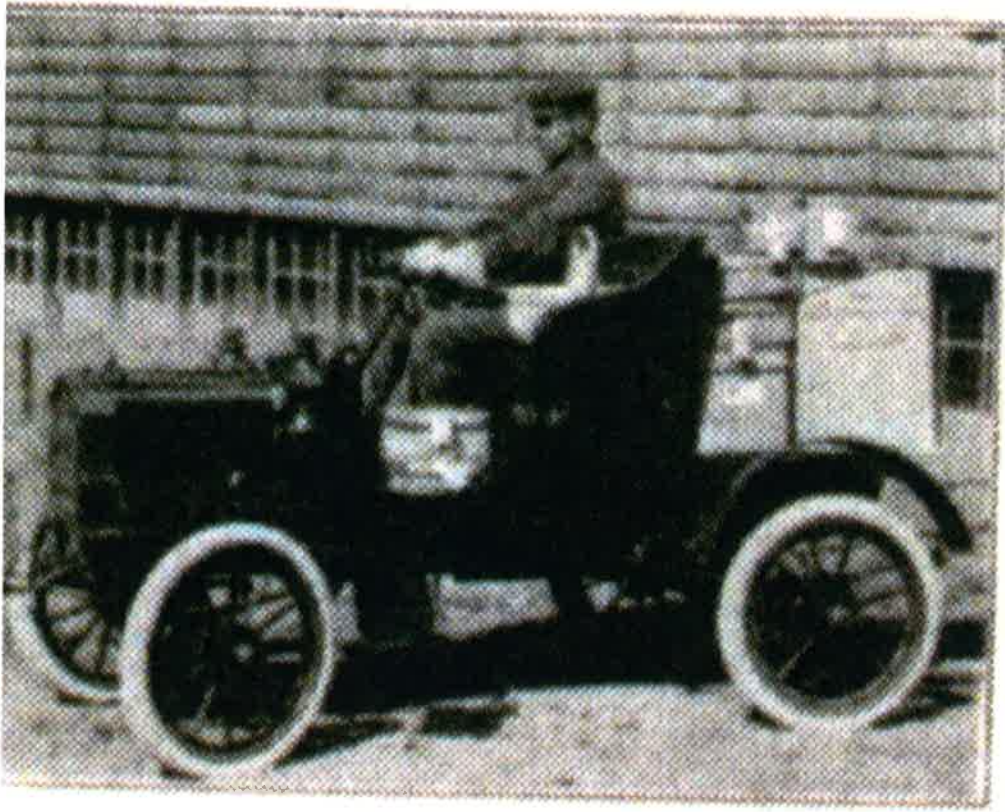
Members of the Utah Agricultural College Alumni Association

ARRANGED IN ORDER OF ALUMNIITY OF GRADUATION

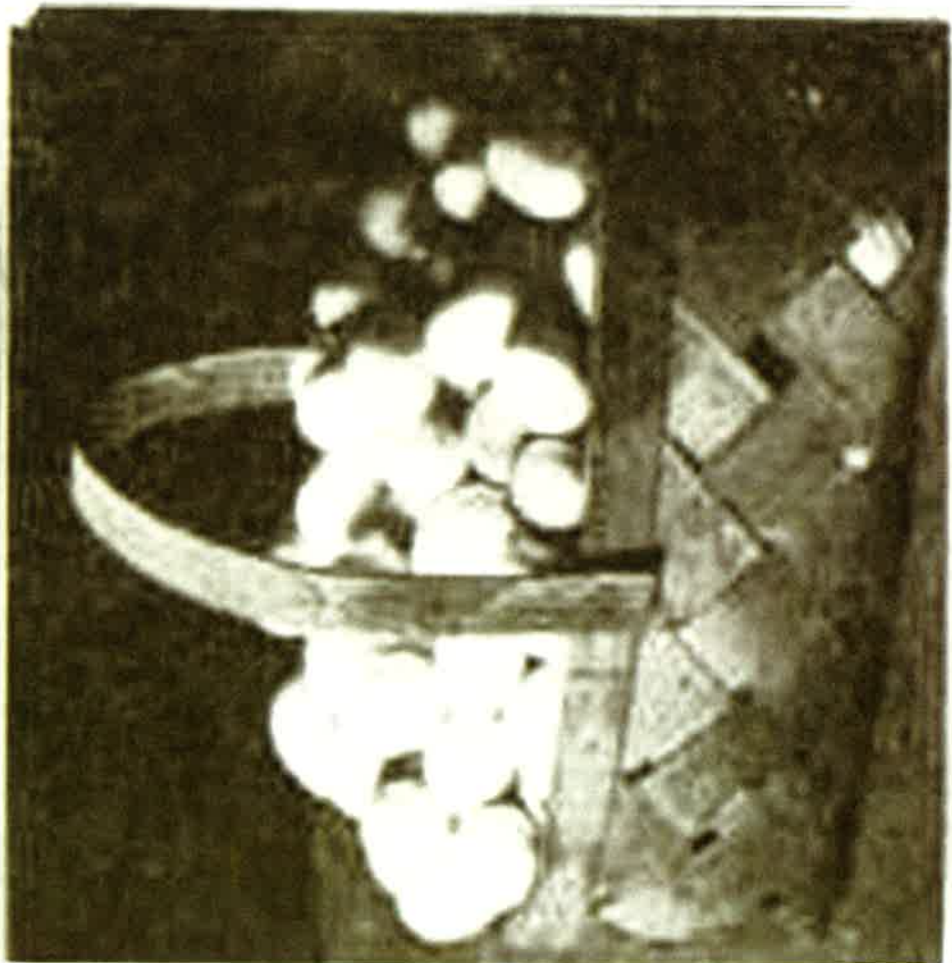
1894	1895	1896	1897	1898	1899	1900
1. Hugh R. Austin	1. D. S. C. Salt Lake City, Utah	1. Dugan, Bernard (Deceased)	1. Barker, Olla	1. Barker, Olla	1. Barker, Olla	1. Barker, Olla
2. Miss Jeanette Anderson	2. Earl Remson	2. Earl Remson	2. Barker, Olla	2. Barker, Olla	2. Barker, Olla	2. Barker, Olla
3. Fern M. Bland	3. Miss Virginia P. Bowman	3. Charles P. Boyton	3. Charles P. Boyton	3. Charles P. Boyton	3. Charles P. Boyton	3. Charles P. Boyton
4. Frederick H. Williamson	4. Charles P. Boyton	4. Charles P. Boyton	4. Charles P. Boyton	4. Charles P. Boyton	4. Charles P. Boyton	4. Charles P. Boyton
5. John S. Boyce	5. Mrs. Ethel Bollen Walsh	5. Mrs. Ethel Bollen Walsh	5. Mrs. Ethel Bollen Walsh	5. Mrs. Ethel Bollen Walsh	5. Mrs. Ethel Bollen Walsh	5. Mrs. Ethel Bollen Walsh
6. Richard S. Blandin	6. Mrs. Mabel Blegen Young	6. Mrs. Blanche E. Clume	6. John T. Crane, Jr.	6. John T. Crane, III	6. John T. Crane, III	6. John T. Crane, III
7. John M. Hildreth	7. John T. Crane, Jr.	7. John T. Crane, III	7. John T. Crane, III	7. John T. Crane, III	7. John T. Crane, III	7. John T. Crane, III
8. Mrs. Olla Berke-Polansky	8. Thomas C. Callister	8. Philip V. Gordon	8. Ernest Carrell	8. Heber Carver	8. John L. Colburn	8. Miss Blanche Cozart
9. Louise E. Hornum	9. Ernest Carrell	9. Heber Carver	9. John L. Colburn	9. Miss Blanche Cozart	9. Stabile, George	9. Will Fred Culbert
10. Mrs. Annie Baker Peets	10. Will Fred Culbert	10. William P. Davy	10. Bernard Dougal	10. Mrs. Geneva Egbert Chase	10. Robert W. Egan	10. Mrs. Ester Evans Davis
11. Winifred Boers	11. Mrs. Geneva Egbert Chase	11. Robert W. Egan	11. Mrs. Ester Evans Davis	11. Robert J. Evans	11. Miss Eva Farr	11. F. D. Farrell
12. Earl Remson	12. Robert J. Evans	12. Miss Eva Farr	12. F. D. Farrell	12. Miss Grace Fisher	12. Ray H. Fisher	12. Burton P. Fleming
13. Miss Virginia P. Bowman	13. Miss Grace Fisher	13. Ray H. Fisher	13. Burton P. Fleming	13. Charles E. Fleming	13. Leon Fennesbee	13. Mrs. Mildred Ferguson Kibb
14. Charles P. Boyton	14. Mrs. Mildred Ferguson Kibb	14. John J. Froelichson	14. John J. Froelichson	14. Robert J. Gordon	14. Mrs. Clara Foster Bacon	14. John J. Froelichson
15. Mrs. Ethel Bollen Walsh	15. John J. Froelichson	15. Robert J. Gordon	15. Robert J. Gordon	15. Robert J. Gordon	15. Robert J. Gordon	15. Robert J. Gordon
16. Mrs. Mabel Blegen Young	16. Robert J. Gordon	16. Robert J. Gordon	16. Robert J. Gordon	16. Robert J. Gordon	16. Robert J. Gordon	16. Robert J. Gordon
17. Mrs. Blanche E. Clume	17. Robert J. Gordon	17. Robert J. Gordon	17. Robert J. Gordon	17. Robert J. Gordon	17. Robert J. Gordon	17. Robert J. Gordon
18. John T. Crane, Jr.	18. Robert J. Gordon	18. Robert J. Gordon	18. Robert J. Gordon	18. Robert J. Gordon	18. Robert J. Gordon	18. Robert J. Gordon
19. John T. Crane, III	19. Robert J. Gordon	19. Robert J. Gordon	19. Robert J. Gordon	19. Robert J. Gordon	19. Robert J. Gordon	19. Robert J. Gordon
20. Thomas C. Callister	20. Robert J. Gordon	20. Robert J. Gordon	20. Robert J. Gordon	20. Robert J. Gordon	20. Robert J. Gordon	20. Robert J. Gordon
21. Philip V. Gordon	21. Robert J. Gordon	21. Robert J. Gordon	21. Robert J. Gordon	21. Robert J. Gordon	21. Robert J. Gordon	21. Robert J. Gordon
22. Ernest Carrell	22. Robert J. Gordon	22. Robert J. Gordon	22. Robert J. Gordon	22. Robert J. Gordon	22. Robert J. Gordon	22. Robert J. Gordon
23. Heber Carver	23. Robert J. Gordon	23. Robert J. Gordon	23. Robert J. Gordon	23. Robert J. Gordon	23. Robert J. Gordon	23. Robert J. Gordon
24. John L. Colburn	24. Robert J. Gordon	24. Robert J. Gordon	24. Robert J. Gordon	24. Robert J. Gordon	24. Robert J. Gordon	24. Robert J. Gordon
25. Miss Blanche Cozart	25. Robert J. Gordon	25. Robert J. Gordon	25. Robert J. Gordon	25. Robert J. Gordon	25. Robert J. Gordon	25. Robert J. Gordon
26. Stabile, George	26. Robert J. Gordon	26. Robert J. Gordon	26. Robert J. Gordon	26. Robert J. Gordon	26. Robert J. Gordon	26. Robert J. Gordon
27. Will Fred Culbert	27. Robert J. Gordon	27. Robert J. Gordon	27. Robert J. Gordon	27. Robert J. Gordon	27. Robert J. Gordon	27. Robert J. Gordon
28. William P. Davy	28. Robert J. Gordon	28. Robert J. Gordon	28. Robert J. Gordon	28. Robert J. Gordon	28. Robert J. Gordon	28. Robert J. Gordon
29. Bernard Dougal	29. Robert J. Gordon	29. Robert J. Gordon	29. Robert J. Gordon	29. Robert J. Gordon	29. Robert J. Gordon	29. Robert J. Gordon
30. Mrs. Geneva Egbert Chase	30. Robert J. Gordon	30. Robert J. Gordon	30. Robert J. Gordon	30. Robert J. Gordon	30. Robert J. Gordon	30. Robert J. Gordon
31. Robert W. Egan	31. Robert J. Gordon	31. Robert J. Gordon	31. Robert J. Gordon	31. Robert J. Gordon	31. Robert J. Gordon	31. Robert J. Gordon
32. Mrs. Ester Evans Davis	32. Robert J. Gordon	32. Robert J. Gordon	32. Robert J. Gordon	32. Robert J. Gordon	32. Robert J. Gordon	32. Robert J. Gordon
33. Robert J. Evans	33. Robert J. Gordon	33. Robert J. Gordon	33. Robert J. Gordon	33. Robert J. Gordon	33. Robert J. Gordon	33. Robert J. Gordon
34. Miss Eva Farr	34. Robert J. Gordon	34. Robert J. Gordon	34. Robert J. Gordon	34. Robert J. Gordon	34. Robert J. Gordon	34. Robert J. Gordon
35. F. D. Farrell	35. Robert J. Gordon	35. Robert J. Gordon	35. Robert J. Gordon	35. Robert J. Gordon	35. Robert J. Gordon	35. Robert J. Gordon
36. Miss Grace Fisher	36. Robert J. Gordon	36. Robert J. Gordon	36. Robert J. Gordon	36. Robert J. Gordon	36. Robert J. Gordon	36. Robert J. Gordon
37. Ray H. Fisher	37. Robert J. Gordon	37. Robert J. Gordon	37. Robert J. Gordon	37. Robert J. Gordon	37. Robert J. Gordon	37. Robert J. Gordon
38. Burton P. Fleming	38. Robert J. Gordon	38. Robert J. Gordon	38. Robert J. Gordon	38. Robert J. Gordon	38. Robert J. Gordon	38. Robert J. Gordon
39. Charles E. Fleming	39. Robert J. Gordon	39. Robert J. Gordon	39. Robert J. Gordon	39. Robert J. Gordon	39. Robert J. Gordon	39. Robert J. Gordon
40. Leon Fennesbee	40. Robert J. Gordon	40. Robert J. Gordon	40. Robert J. Gordon	40. Robert J. Gordon	40. Robert J. Gordon	40. Robert J. Gordon
41. Mrs. Mildred Ferguson Kibb	41. Robert J. Gordon	41. Robert J. Gordon	41. Robert J. Gordon	41. Robert J. Gordon	41. Robert J. Gordon	41. Robert J. Gordon
42. Mrs. Clara Foster Bacon	42. Robert J. Gordon	42. Robert J. Gordon	42. Robert J. Gordon	42. Robert J. Gordon	42. Robert J. Gordon	42. Robert J. Gordon
43. John J. Froelichson	43. Robert J. Gordon	43. Robert J. Gordon	43. Robert J. Gordon	43. Robert J. Gordon	43. Robert J. Gordon	43. Robert J. Gordon
44. Robert J. Gordon	44. Robert J. Gordon	44. Robert J. Gordon	44. Robert J. Gordon	44. Robert J. Gordon	44. Robert J. Gordon	44. Robert J. Gordon
45. Robert J. Gordon	45. Robert J. Gordon	45. Robert J. Gordon	45. Robert J. Gordon	45. Robert J. Gordon	45. Robert J. Gordon	45. Robert J. Gordon







STARTING FOR THE STATION WITH
CHICKS AND EGGS



PART OF A DAY'S
HARVEST

ANNUAL INFORMATION RETURN FOR CALENDAR YEAR 1923

SUMMARY OF REPORTS OF INCOME PAYMENTS OF \$1,000 OR MORE
REQUIRED TO BE REPORTED UNDER REVENUE ACT OF 1921

<p><small>THIS RETURN, ACCOMPANIED BY REPORTS ON FORMS 1099, MUST BE FORWARDED TO REACH THE COMPTROLLER OF INTERNAL REVENUE, WASHINGTON, D. C., ON OR BEFORE MARCH 15, 1924.</small></p> <p style="text-align: center;">EMERY JOHNSON BANK <small>(Name of person or organization rendering this return.)</small></p> <p style="text-align: center;">CASTLE L. B. U. S. B. <small>(Person and number or firm's name.)</small></p> <p style="text-align: center;">SAINT LOUIS <small>(City.)</small></p> <p style="text-align: center;">(A) CHARACTER OF INCOME PAID.</p>	<p style="text-align: right;"><small>(Date received by reporting institution)</small></p> <p style="text-align: right;">(B) NUMBER OF REPORT FORMS FOR 1923 ATTACHED.</p> <p style="text-align: right;">3</p>
--	---

Salaries, wages, and other compensation, interest, rents, royalties, and other fixed or determinable gains, profits, and income, including foreign income, of \$1,000 or more.

(DO NOT WRITE IN THIS SPACE.)

IMPORTANT NOTICE

Returns of information are required to be rendered on the basis of the calendar year. Returns for any other period of time will not be accepted.

If list showing names and addresses of payees is compiled or an adding machine tape used in executing Form 1099, it should be submitted with Form 1099.

The name of the individual, corporation, partnership, etc., using Form 1099 may be printed or stamped on each form, if so desired. Returns of individuals on this form must be signed and sworn to by the individual or his duly authorized agent. Returns of corporations, partnerships, etc., must be signed and sworn to by an officer of the corporation or member of firm.

I swear (or affirm) that to the best of my knowledge and belief the foregoing return and the accompanying reports constitute a true and complete statement of payments of the above-described classes of taxes made by the person or organization named at the head of this return during the calendar year 1923.

Sworn to and subscribed before me this 17 day of May, 1924.

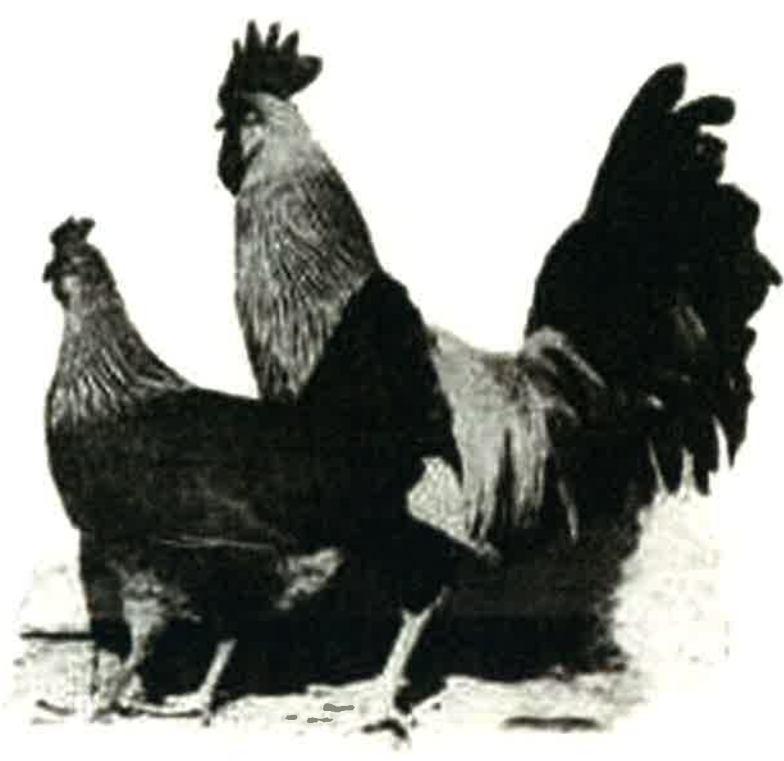
Wm. C. ... (Signature)
(Print name, title, and address of person signing (different from that given at head of return.)

(Print name, title, and address of person signing (different from that given at head of return.)

Wm. C. ... (Signature)
(Print name, title, and address of person signing (different from that given at head of return.)

(SEE INSTRUCTIONS ON REVERSE SIDE)

Wm. C. ... (Signature)
 3-12-24



CAPITAL STOCK, \$25,000
EMERY COUNTY BANK
 CASTLE DALE, UTAH.

JAMES CRAWFORD, JR., PRESIDENT
 EDUMUND CRAWFORD, CASHIER

JAMES SINGLETON, VICE PRESIDENT

July 27th 1908.

James Crawford, Samuel Singleton, P P Dyrang, Edmund Crawford
 George H Miller, A E Wall and James B Crawford having been duly elec-
 ted to the Office of Directors of the Emery County Bank, solemnly
 swear each for himself that he will discharge the duties of the Office
 of Director of said Emery County Bank to the best of his ability, that
 he will not do nor consent to the doing of any matter or thing pertai-
 ning to the business of said corporation with intent to defraud any
 Stockholder therein, Creditor thereof or the Public.

James Crawford
Samuel Singleton
P P Dyrang
Edmund Crawford
George H Miller
A E Wall
J B Crawford

Subscribed and sworn to before me this 27th day of July,

A. D. 1908.

My Commission Expires,
 November 19, 1909.

My Commission expires 190_



Form 100
 U. S. FEDERAL TAX SERVICE
INFORMATION RETURN FOR CALENDAR YEAR 1923
REPORT OF INCOME PAYMENTS OF \$1,000 OR MORE
 SALARIES, WAGES, RENT, INTEREST, OR OTHER FIXED OR DETERMINABLE GAINS, PROFITS, AND INCOME
 BY WHOM PAID TO WHOM PAID

NAME Emery County Bank STATE Utah CITY Castle Dale COUNTY Emery STATE Utah
 STREET 700 CITY Castle Dale STATE Utah AMOUNT PAID
 INSTRUCTIONS TO PAYORS
 Fill in one of these forms for each individual, partnership, or
 fiduciary to whom income, as described on this form, was paid.
 Forward with return Form 1000 so as to reach the Commissioner
 of Internal Revenue, Starting Section, Washington, D. C.,
 on or before March 15, 1924.
 Do not report on this form dividends on stock of domestic
 corporation, or interest on bonds and other obligations of the
 United States.
 FOR FURTHER INSTRUCTIONS SEE FORM 1000 P-1344

Salaries, wages, fees, commissions, etc.	1900
Interest on notes, mortgages, etc.	
Bonus and royalties	
Other income, including foreign income	

Form 1000
 U. S. FEDERAL TAX SERVICE
INFORMATION RETURN FOR CALENDAR YEAR 1923
REPORT OF INCOME PAYMENTS OF \$1,000 OR MORE
 SALARIES, WAGES, RENT, INTEREST, OR OTHER FIXED OR DETERMINABLE GAINS, PROFITS, AND INCOME
 BY WHOM PAID TO WHOM PAID

NAME Justice Dale STATE Utah CITY Castle Dale COUNTY Emery STATE Utah
 STREET 708 CITY Castle Dale STATE Utah AMOUNT PAID
 INSTRUCTIONS TO PAYORS
 Fill in one of these forms for each individual, partnership, or
 fiduciary to whom income, as described on this form, was paid.
 Forward with return Form 1000 so as to reach the Commissioner
 of Internal Revenue, Starting Section, Washington, D. C.,
 on or before March 15, 1924.
 Do not report on this form dividends on stock of domestic
 corporation, or interest on bonds and other obligations of the
 United States.
 FOR FURTHER INSTRUCTIONS SEE FORM 1000 P-1344

Salaries, wages, fees, commissions, etc.	1300
Interest on notes, mortgages, etc.	
Bonus and royalties	
Other income, including foreign income	



Edmund Crawford

Castle Dale, Utah. *June 10* 191*8* No. _____

EMERY COUNTY BANK 97-58

Pay to the order of *Brookman* — \$ *30⁰⁰*

Thirty _____ Dollars

started may 3 *Edmund Crawford*

MAKERS OF THE BEST